 ESTD. 1960	H.R. Scientific Works In ISO 9001: 2015 Certified Co. 11, Gandhi Nagar, Kardhan Road, Near Lala Wala Peer Ambala Cantt- 133001. Haryana (India). www.hrscientifics.com	GSTIN : 06AADFH7103C2ZZ Contact Person: Wahid Shaikh Mobile: 9773674756. Email: wahids88@gmail.com		
To, Seva Sahayog Foundation.		Date: 29 th November, 2023		
<u>Subject: Quotation for o n e school for establishment of Science Centre.</u>				
Sr.No	Description	Basic Cost	GST 18 %	Total Budget of 1 School
1	Science Centre	420000	75600	495600
2	Orientation	42000	7560	49560
3	Maintenance	45000	8100	53100
4	Furniture	50000	9000	59000
Total Budget of 1 School		557000	100260	657260

Budget of 1 school will be 6,57,260/- Including Taxes

Six Lakh fifty seven thousand two sixty only

For H. R. SCIENTIFIC WORKS
Auth. Signatory

Authorized Signatory

Science Centre Model Pictures:

HR-1026
BATTERY CHARGER



HR-1027
BATTERY ELIMINATOR



HR-1028
DC POWER SUPPLY



HR-1053
WIND DYNAMO



HR-1054
WIND MILL
BOX TYPE



HR-1055
WIND MILL STAND TYPE



HR-1029
DC REGULATED
POWER SUPPLY



HR-1030
TWO STAGE
RC COUPLED AMPLIFIER



HR-1031
SERIES & PARALLEL
EXPERIMENTS



HR-1056
VAN DE GRAAFF
(MOTORIZED)



HR-1057
VAN DE GRAAFF
(GENERATOR SUPERIOR)



HR-1058
VAN DE GRAAFF
(MANUAL)



HR-1062
ELECTROSCOPE BRAUN



HR-1063
ELECTROSCOPE GOLD LEAF
WOODEN



HR-1064
ELECTROSCOPE GOLD LEAF
METAL



HR-1068
HAND WHEEL DRIVEN UNIT



HR-1069
FLY WHEEL UNIT



HR-1070
ENERGY CONVERSION KIT



HR-1065
ELECTROSCOPE GOLD LEAF
IN GLASS



HR-1066
ELECTROSTATIC KIT



HR-1067
WHIMSHURST MACHINE



HR-1071
HAND TURBINE PUMP UNIT



HR-1072
WATER TURBINE MODEL



HR-1073
SPRING UNIT



HR-1038
OHMS LAW APPARATUS



HR-1039
F.E.T. CHARACTERISTICS
APPARATUS



HR-1040
SEMICONDUCTOR
CHARACTERISTICS TRAINER
WITH ANALOG METER



HR-1050
DISCHARGE TUBE



HR-1051
PIN-POINT IMPRESSION



HR-1052
PROOF PLANE
(20 MM DIA. METAL DISC
WITH INSULATING HANDLE)



HR-1011
GALVANOMETER EDSPOT
WITH POWER SUPPLY



HR-1340
MAGNETIZER
& DE-MAGNETIZER



HR-1098
PRISM EQUILATERAL GLASS



HR-1099
PRISM RIGHT ANGLE GLASS



HR-1100
OPTICAL BLOCK
RECTANGULAR - GLASS



HR-1104
LENS CONCAVE



HR-1105
LENS CONVEX



HR-1106
LENS CYLINDRICAL CONCAVE



HR-1101
OPTICAL BLOCK
RECTANGULAR - ACRYLIC



HR-1102
MIRROR CONCAVE



HR-1103
MIRROR CONVEX



HR-1107
LENS CYLINDRICAL CONVEX



HR-1108
LENS SET ACRYLIC



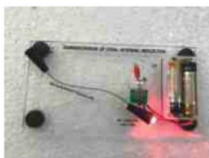
HR-1109
HOLLOW SLAB GLASS



HR-1122
STRAIGHT LINE OF LIGHT



HR-1123
TOTAL INTERNAL REFLECTION



HR-1124
POLARIMETER STUDENT
HALF SHADE



HR-1134
OPTICAL TANK



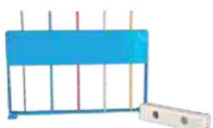
HR-1135
PRIMARY COLOUR APPARATUS



HR-1136
OPTIC KIT SIMPLE



HR-1125
LATERAL SHIFT



HR-1126
L. B. PHOTOMETER



HR-1127
SPECTROSCOPE METAL
DIRECT VISION



HR-1137
RAY OPTIC KIT
WITH ACRYLIC LENS



HR-1138
RAY BOX METAL
WITH SLIT AND LENS



HR-1139
LIGHT BOX AND OPTICAL KIT



HR-1131
KALEIDOSCOPE



HR-1132
PORTABLE TELESCOPE



HR-1133
READING TELESCOPE MODEL



HR-1128
SAFETY GOGGLES



HR-1129
SPECTROSCOPE



HR-1130
PERISCOPE



HR-1140
LIGHT OPTIC KIT WOODEN



HR-1142
POLAROID'S BRASS
IN VELVET BOX



HR-1143
NEWTON'S COLOR DISC



HR-1341
MAGNET KIT

A kit of magnets and accessories in a storage tray.
Contents : 1. One Horseshoe magnet, 100 mm, with keepers. Two ceramic bar magnets, 75 mm long. 2. Three ceramic ring magnets, 38 mm diam. 3. Two plotting compasses clear both sides, 19 mm diam. 4. One lodestone specimen. 5. One pack Iron Filing. 6. Four metal strips (Iron, Aluminium, Zinc and Copper).



HR-1144
PIN HOLE CAMERA WOODEN



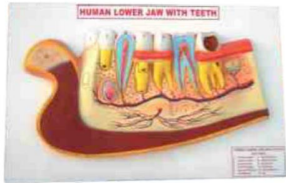
HR-1145
PERSISTENCE OF VISION



HR-1146
OBJECT NEEDLE



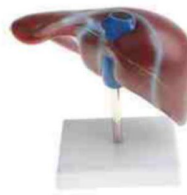
HR-3019
HUMAN LOWER JAW WITH TEETH



HR-3020
HUMAN HEAD FIBER MODEL



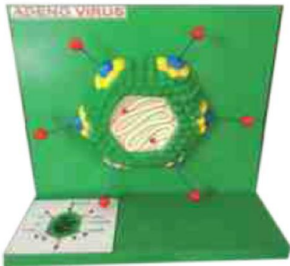
HR-3024
HUMAN LIVER MODEL



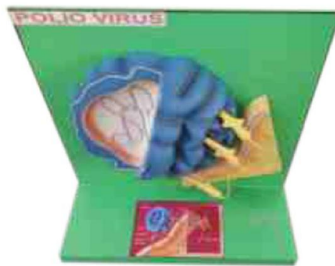
HR-3025
HUMAN ALVEOLI MODEL



HR-3021
MODELS OF ADENO



HR-3022
POLIO



HR-3023
AIDS VIRUS



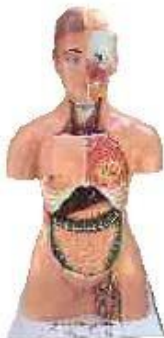
HR-3001
HUMAN EYE MODEL



HR03002
HUMAN HEART MODEL



HR-3003
HUMAN TORSO FEMALE MODEL



HR-3004
HUMAN CIRCULATORY SYSTEM MODEL



Payment Terms:

Sr. No.	Description	% of Total Project Budget	Amount in Rs	Due on
1	1st Payment	50%	3,28,630	Against Purchase order.
2	2nd Payment	50%	3,28,620	After Installation of Science Centre

Science Centre cost break-up:

Description	Basic Cost	GST	Total
Science Models Cost	315000	56700	371700
Delivery, Installation & Model Manuals	105000	18900	123900
Total Cost of Science Centre	420000	75600	495600

Infrastructure Break-up:

Wooden particleboard for furniture & Conveyance of Materials.	50000
GST 18%	9000
Grand Total	59000

For H. R. SCIENTIFIC WORKS
Auth Signatory

Authorized Signatory